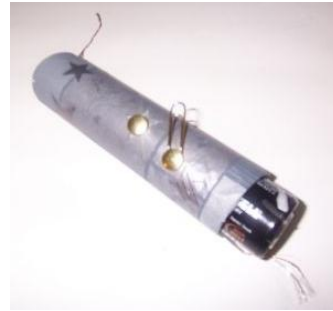


Battery Operated Lights



Key Objectives

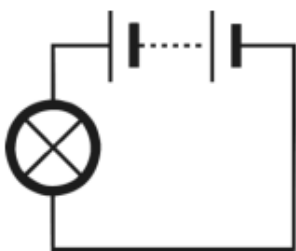
- To identify different types of lamp and the features of a torch.
- To design and make different types of switches and investigate casings.
- To design a torch by thinking about its purpose.
- To make a torch and evaluate the outcome.

Key Vocabulary

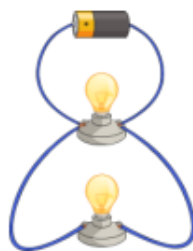
Electricity	A type of energy that can build up in one place or flow from one place to another.
Mains Operated	Appliances that plug into a socket use mains electricity, such as televisions.
Battery Operated	Appliances that work without having to be plugged into a socket and use batteries to power them, such as mobile phones.
Circuit	A closed path through which an electric current flows.
Insulator	A material that does not easily allow electric to pass through it.
Conductor	A material which allows electric to pass through it.

Sticky Knowledge

- An electrical circuit needs to be closed in order for the current to flow through.



Series Circuit



Parallel Circuit

lamp



motor



battery



switch



buzzer



Circuit Symbols